

A photograph of the Eiffel Tower in Paris, France, taken during sunset. The tower is the central focus, with its intricate lattice structure clearly visible. The sun is low on the horizon to the left, creating a bright lens flare and casting a warm, golden glow over the scene. In the foreground, there is a bridge with several arches spanning a river. The sky is a clear, deep blue, and the overall atmosphere is serene and picturesque.

INSTRUCTIONS FOR USE
How to create an access
request on

<http://logipass.viparis.com>



VIPARIS

NEW CONTROL ACCESS MEASURE

To enable safer and fluid operations, it is mandatory to register on Logipass all vehicles requiring access to delivery areas and exhibitor parkings (Paris le Bourget, Paris Nord Villepinte).

BOTH FOR ASSEMBLY and DISASSEMBLY TIME

as well as for deliveries during public opening (specific time schedules)

If you don't know yet the vehicle's licence plate : you can still register your request and update this information online at the arrival on site.

If you do not know what will be your ETA : please select an approximate schedule for the day without exceeding allowed duration, the time schedule will be update at your actual arrival on site.

User assistance



NEED HELP ?

For a focused help on this page

For general help

Look at the manual



+33 1 40 68 11 30



infos-exposants@viparis.com

An online help pane is available to assist users :

Click on



The instruction for use will guide you for the whole access request creation process :

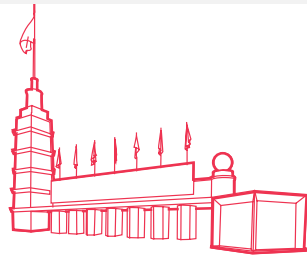
The online support is customized for each step.

The hotline is at your disposal and can be reached by :

- Phone : +33 (1) 40 68 11 30
- E-mail : infos-exposants@viparis.com

Details per site

Parking duration in delivery areas are restricted to a specific shedule and should not exceed required time to perform the delivery. However, it is possible to stay in visitors or exhibitors parkings which are opened during assembly and disassembly times.



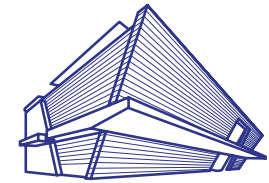
PARIS
EXPO
PORTE DE VERSAILLES



PARIS NORD
VILLEPINTE



Paris
Le Bourget



palais des congrès
de paris

Cars	Through Parking F and R (out of disassembly time and hall 5)	Exhibitors parking With registration : 12h max		30 min max
Commercial vehicle	2h max	2h max	2h max	2h max
Truck	4h max	4h max	4h max	4h max



ESPACE
CHAMPERRET



ESPACE
GRANDE ARCHE




LES SALLES
DU CARROUSEL

Cars	30 min max
Commercial vehicle	1h max
Truck	4h max

Create a user account

1 Choose the language

2 Click on **Create your LOGIPASS account.**

 Password shall contain at least 6 characters including 1 capital letter, 1 number et 1 special character.

3 Fill in all mandatory fields.
Mandatory fields are spotted with a red star.

4 Approve Policies and Conditions by clicking on the check box

5 Validate the captcha

6 Save

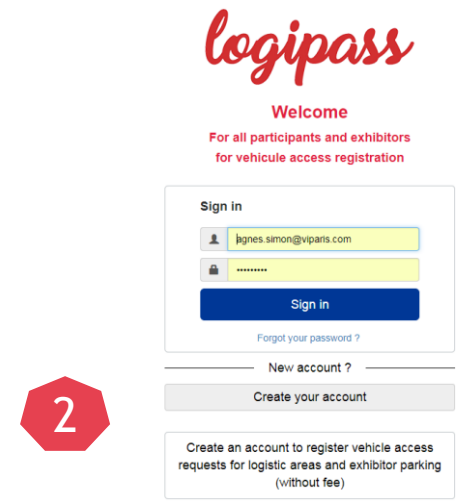
Your account is now created

1

EN

FR DE EN ES IT PL

2



logipass

Welcome

For all participants and exhibitors for vehicle access registration

Sign in

ignes.simon@viparis.com

.....

Sign in

Forgot your password ?

New account ?

Create your account

Create an account to register vehicle access requests for logistic areas and exhibitor parking (without fee)

Create your account

3

Name *

First name

Email address *

Password must have at least 6 characters, 1 upper case, 1 numeric value and 1 special character

Password *

Confirm the password *

Firm *

Business sector * Select an item

Phone *

Street name *

Street name 2

Zipcode *


City *

Country * Select an item

By checking this box, I admit having knowledge and accept the Policies and conditions

5

I'm not a robot



reCAPTCHA

Drive - Terms

6

Save

Create an access request 1/2

1 All your registred requests will appear under the menu « Access requests »

2 Click on **Create a request**

3 Fill in all mandatory fields. Mandatory fields are spotted with a red star.

Regarding exhibitor field :
If the field shows « Do not fill », move next
Else, enter at least the 2 first characters and click on the right exhibitor name.
If you could not find the correct name, then select « Exhibitor not found »

ACCESS REQUEST

1

2

Data download **Create a request**

Search for requests

Show 10 entries

Access number	Venue	EVENT	Exhibitor	Incoming firm/Carriers	Licence / number plate	Vehicle size	Arrival date	Level	Phasis	Actions
312347	PCP	ORIFLAME	Ne pas renseigner	Do not fill	Do not fill	Cars&Bikes	08/10/2018 10:00	Approved	Assembly 1	
312330	PCP	Touken Rambu - Musical	Ne pas renseigner	Do not fill	Do not fill	Cars&Bikes	07/11/2018 14:00	Approved	Assembly 1	

Showing 1 to 2 of 2 entries

Previous 1 Next

Requester

Venue *

Event name *

Exhibitor name *

Hall *

Stand

Hall access

Firm * TESTGWEXPOSANT

Contact name *

Contact Phone *

Contact mail *

Business sector *

Driver

Driver name and first name

Driver mobile phone *

Incoming firm/Carriers *

Vehicle

Plate (can be changed after approval) *

Trailer or machine licence plate

Vehicle size *

Transport information (ex : catering)

Transport type *

Transported quantity

4 Click on SAVE or NEXT STEP

Save **Next step**

5 The request progression can be checked at the top of the screen



5

Create an access request 2/2

7 Select the time schedule for your arrival date



The access duration to the delivery area will be automatically adjusted to your type of vehicle.

8 In case of mistake, use the option Delete the selected time slot

9 If required, a tab « Files » enables to upload files.
A field Comment is also available.

10 Check the box to acknowledge the Policies and conditions

11 Click on Submit.

Jul 18 – 26, 2018

7am	8am	9am	10am	11am	12pm	1pm	2pm	3pm	4pm	5pm	6pm	7pm
Wed 7/18	Thu 7/19	Fri 7/20	Sat 7/21	Sun 7/22	Mon 7/23	Tue 7/24	Wed 7/25	Thu 7/26	Fri 7/27	Sat 7/28	Sun 7/29	Mon 7/30

Use the button "files" to upload useful documents For catering, joining an invoice is mandatory

Files

Comments

By checking this box, I admit having knowledge and accept the [Policies and conditions](#)

Submit

Check your access request

10 Your request has been submitted. You can check your authorization number. An e-mail will be sent to you as soon as your request will be confirmed by our service.

11 Download and print your pass (PDF format)

You can find and check all your access requests on LOGIPASS main screen.

Licence plate can be updated until arrival on site with the button 

12 If you need to apply for several access requests for a same event, the button DUPLICATE will help you to save time.

13 Do not forget to also apply for DISASSEMBLY time. Again the button DUPLICATE will help you to save time.

Approved This request has been approved. Please use the button Duplicate to add a new appointment for set up and DISMANTLING. Thanks for printing the pass

10

Approval number	312365
Venue	Paris Nord Villepinte
Current map	Show
Arrival date on venue	07/18/2018 09:30
Departure date from venue	07/18/2018 23:30
Comments	
Pass for logistic area	Print
Gate	Entrée Exposit Liv.
Area	1- Hall 1 - Pe1 - Porte A

11

Duplicate

Clauses de réserve

Cette présentation a été préparée par Viparis pour usage générale et est distribué pour information générale seulement. Toutes les précautions raisonnables ont été prises pour assurer que l'information contenue dans ce document n'est pas faux ou trompeurs, mais aucune déclaration n'est faite quant à leur exactitude ou leur exhaustivité. Les opinions exprimées dans cette présentation sont sujettes à modification sans préavis et Viparis n'est pas dans l'obligation de mettre à jour ou actualiser les informations contenues dans ce document. Viparis n'assume aucune responsabilité pour toute perte ou dommages de toute nature résultant de l'utilisation de tout ou partie de cette présentation.

La présentation ne doit pas être considérée par les destinataires comme un substitut à l'exercice de leur propre jugement. Cette présentation n'a pas tenu des objectifs de placement, la situation financière et les besoins particuliers d'une personne spécifique qui pourrait les recevoir. Les investisseurs devraient solliciter des conseils financiers quant à la pertinence d'investir dans des valeurs mobilières ou des stratégies d'investissement examinés ou recommandés dans cette présentation et devraient comprendre que les énoncés relatifs aux perspectives pourraient ne pas se réaliser. Les investisseurs doivent noter que les revenus de ces titres, le cas échéant, peuvent fluctuer et que le prix ou la valeur de chaque titre peut augmenter ou diminuer. Par conséquent, les investisseurs peuvent recevoir moins que du montant initialement investi. Les performances passées ne préjugent pas des performances futures.

Disclaimer

This presentation has been prepared by Viparis for general circulation and is circulated for general information only. All reasonable care has been taken to ensure that the information contained herein is not untrue or misleading, but no representation is made as to its accuracy or completeness. Any opinions expressed in this presentation are subject to change without notice and Viparis is not under any obligation to update or keep current the information contained herein. Viparis accepts no liability whatsoever for any loss or damage of any kind arising out of the use of all or any part of this presentation.

The presentation should not be regarded by recipients as a substitute for the exercise of their own judgment. This presentation does not have regard to the specific investment objectives, financial situation and the particular needs of any specific person who may receive it. Investors should seek financial advice regarding the appropriateness of investing in any securities or investment strategies discussed or recommended in this presentation and should understand that statements regarding future prospects may not be realized. Investors should note that income from such securities, if any, may fluctuate and that each security's price or value may rise or fall. Accordingly, investors may receive back less than originally invested. Past performance is not necessarily a guide to future performance.